

# DEVELOPMENT APPLICATION

## PENSHURST PARK, 643 KING GEORGES ROAD - PENSHURST NSW 2222

### Development Application for Penshurst Park - STAGES 2 + 3

Stage 1 - Cricket Centre - Subject to Separate Application - refer to DA - 2016/0171

**Stage 2 - Demolition of structures in Park + construction of new public amenities, synthetic sports field, canteen, stadium, change rooms, and Youth Facility with general Landscaping.**

**Stage 3 - Extension to existing Hurstville Aquatic Leisure Centre, including reconfiguration of parking, and new Bus Entry to Cambridge St with associated Landscaping works.**

### DRAWING LIST

- DA - 000
- Cover Sheet & Photomontage
- DA - 001
- Location Plan & Site Analysis
- DA - 002
- Site Plan - Demolition
- DA - 003
- Site Plan - Proposed

- DA - 100
- Ground Floor Overall Plan
- DA - 101
- First Overall Floor Plan
- DA - 102
- Roof Plan

- DA - 150
- Stage 2 - Floor Plans
- DA - 151
- Car Park Plan
- DA - 152
- Stage 3 - Floor Plan

- DA - 200
- Stage 2 - Sections Elevations
- DA - 201
- Stage 3 - Sections
- DA - 202
- Stage 3 - Elevations

- DA - 700
- Shadow Diagrams

- DA - 800
- Schedule of Colours & Finishes

- DA - 900
- 3D View 1
- DA - 901
- 3D View 2
- DA - 902
- 3D View 3

- DA - 950
- Notification Plan



### DOCUMENTS TO BE READ IN CONJUNCTION WITH

- Landscape Plan
- Survey Plan
- Traffic Report
- Statement of Environmental Effects
- Flood Impact Assessment
- BCA Report
- Lighting Assessment
- Geotech Desktop Study Report
- Acoustic Report
- Waste Management Report
- Tree Management Report

#### STAGE 2 PROPOSED WORKS

TOTAL GFA: 1220 SQM.

- New synthetic field with permeable base
- New running track
- New scoreboard
- Re-location/ and re-use of playground equipment
- New exercise station
- New 280 seat accessible grandstand with associated change facilities
- New public male and female toilets
- New Field equipment store
- New Canteen/ Bar facilities
- New sports medical rooms (Physio/ Referee)
- New Sports Office with elevation viewing platform
- New 500 sq.m Youth Centre
- New field lighting

#### STAGE 3 PROPOSED WORKS

TOTAL GFA: 3712 SQM.

- 2 x New Basketball Courts (1 x national grade Futsal court) with associated grandstand
- New Male and female change facilities
- New Cafe with commercial kitchen
- Outdoor viewing platform
- National grade gymnastics space with associated storage
- Lift access
- New bus drop-off area
- New Medical room
- New administration office

#### DOCUMENTS BY OTHER

**PLANNING**  
DAMIAN OTTOOLE TOWN PLANNING  
STUDIO 9 - LEVEL 5  
35 BUCKINGHAM STREET  
SURRY HILLS NSW 2010  
T. 9590 0460  
E. INFO@TOWNPLANNING.NET.AU

**LANDSCAPE ARCHITECTS**  
STURT NOBLE ASSOCIATES  
SUITE 91  
330 WATFORD ST  
ULTIMO NSW 2007  
T. 9211 3744  
E. GUYS@STURTNOBLE.COM.AU

**CIVIL + ELECTRICAL + ACOUSTIC ENGINEERING**  
WOOD & GRIEVE ENGINEERS  
LEVEL 6 - BUILDING B  
207 PACIFIC HIGHWAY  
ST LEONARDS NSW 2065  
T. 9484 7000  
E. SYDNEY@WGE.COM.AU

**BCA ASSESSMENT**  
BUILDING CERTIFICATES AUSTRALIA  
SUITE 505  
64-67 KIPPAX ST  
SURRY HILLS NSW 2010  
T. 8014 7720  
E. PETER@BCAUSTRALIA.NET.AU

**QUANTITY SURVEYOR**  
MBMPL  
LEVEL 7  
68 PITT ST  
SYDNEY NSW 2000  
T. 9270 1070  
E. KEITH@MBMPL.COM.AU

**TRAFFIC**  
TRANSPORT & TRAFFIC PLANNING ASSOCIATES  
SUITE 502 - LEVEL 5  
282 VICTORIA AVE  
CHATSWOOD NSW 2067  
T. 9411 5660  
E. ROSS@TTPA.COM.AU

**FLOOD IMPACT ASSESSMENT**  
CATCHMENT SIMULATION SOLUTIONS  
SUITE 2.01  
210 GEORGE ST  
SYDNEY NSW 2000  
T. 8355 5500  
E. DTETLEY@CSS.COM.AU

**SURVEY**  
HARRISON FRIEDMAN & ASSOCIATES  
365 PRINCES HIGHWAY  
CARLTON NSW 2218  
T. 8558 7100  
E. MAIL@HFSURVEYORS.COM.AU

**GEOTECHNICAL DESKTOP STUDY**  
ENVIRONMENTAL INVESTIGATIONS AUSTRALIA  
SUITE 6.01  
55 MILLER ST  
PYRMONT NSW 2009  
T. 9516 0722  
E. JOSEPH.CHAGHOURI@EIAUSTRALIA.COM.AU

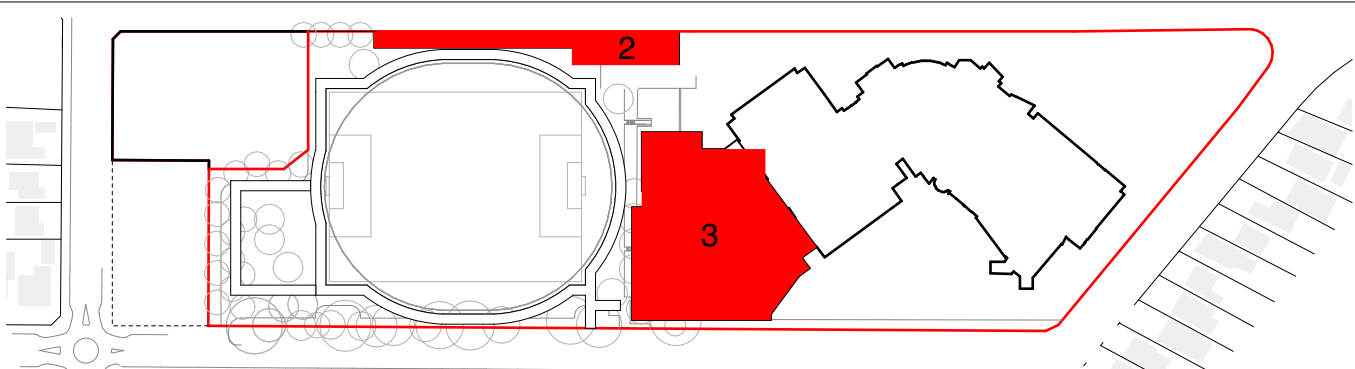
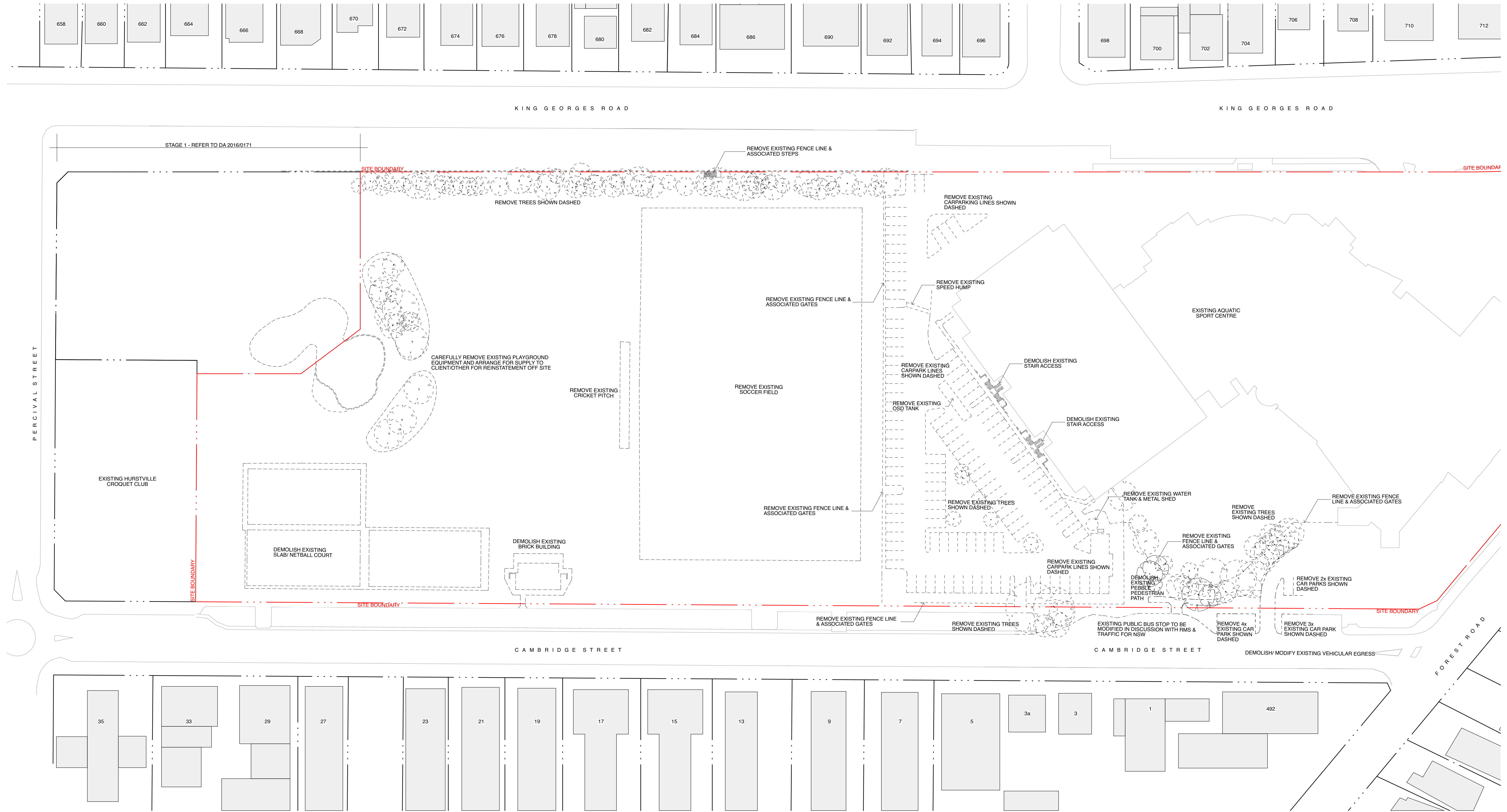
**TREE MANAGEMENT OFFICER**  
GEORGES RIVER COUNCIL  
CIVIC CENTRE  
MACMAHON ST  
HURSTVILLE NSW 2220  
T. 9330 6221  
E. SLUNISS@GEORGESRIVER.NSW.GOV.AU

A		11/08/2017		DEVELOPMENT APPLICATION		
ISSUE	DATE	REVISION				
PROJECT	PENSHURST SPORTING HUB					
ADDRESS	PENSHURST PARK KING GEORGES ROAD PENSHURST NSW 2222 AUSTRALIA					
CLIENT	GEORGES RIVER COUNCIL				DATE	22/08/2017
DWG	Cover Sheet & Photomontage				DRAWN	AK
CHKD					AB	REVISION
PROJECT #						16002
DWG #						DA-000

All dimensions are in millimetres unless stated otherwise.

All architectural drawings are to be read in conjunction with the relevant consultant documents. All dimensions and levels are to be checked and verified on site prior to the commencement of work, shop drawings or fabrication of any components. Refer all discrepancies to the Architect for determination. Drawings are not to be scaled, use only figured dimensions. This drawing is copyright and must not be retained, copied or used without the permission of Baker Kavanagh Architects. This document has been prepared for and on behalf of the clients noted on the drawing. Baker Kavanagh Architect's responsibility is to these clients only and not to any third party who may rely on these documents.

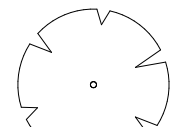




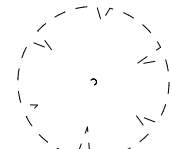
KEY DIAGRAM (NTS)

LEGEND

- SITE BOUNDARY
- EXISTING STORMWATER CHANNEL
- EXISTING SITE CONDITIONS TO BE RETAINED
- EXISTING SITE ITEMS TO BE DEMOLISHED
- AREA TO BE LANDSCAPED
- PEDESTRIAN WALKWAYS

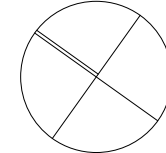


TREE TO BE RETAINED -  
REFER TO ARBORIST  
REPORT FOR TREE  
PROTECTION ZONES



TREE TO BE REMOVED

NORTH



**BKA** architecture

Baker Kavanagh Architects  
Suite 1.04, 77 Dunning Ave, Rosebery NSW

T: 612 9318 9220  
W: www.bka.com.au

F: 612 9318 9222  
E: bka@bka.com.au

All dimensions are in millimetres unless stated otherwise.  
All architectural drawings are to be read in conjunction with the relevant consultant documents. All dimensions and levels are to be checked and verified on site prior to the commencement of work, shop drawings or fabrication of any components. Refer all discrepancies to the Architect for determination. Drawings are not to be scaled, use only figured dimensions. This drawing is copyright and must not be retained, copied or used without the permission of Baker Kavanagh Architects. This document has been prepared for and on behalf of the clients noted on the drawing. Baker Kavanagh Architect's responsibility is to these clients only and not to any third party who may rely on these documents.

A 11/08/2017 DEVELOPMENT APPLICATION

ISSUE DATE REVISION

PROJECT **PENSHURST SPORTING HUB**

ADDRESS **PENSHURST PARK KING GEORGES ROAD PENSHURST NSW 2222 AUSTRALIA**

PROJECT # **16002**

CLIENT **GEORGES RIVER COUNCIL**

DATE **22/08/2017** DWG # **DA-002**

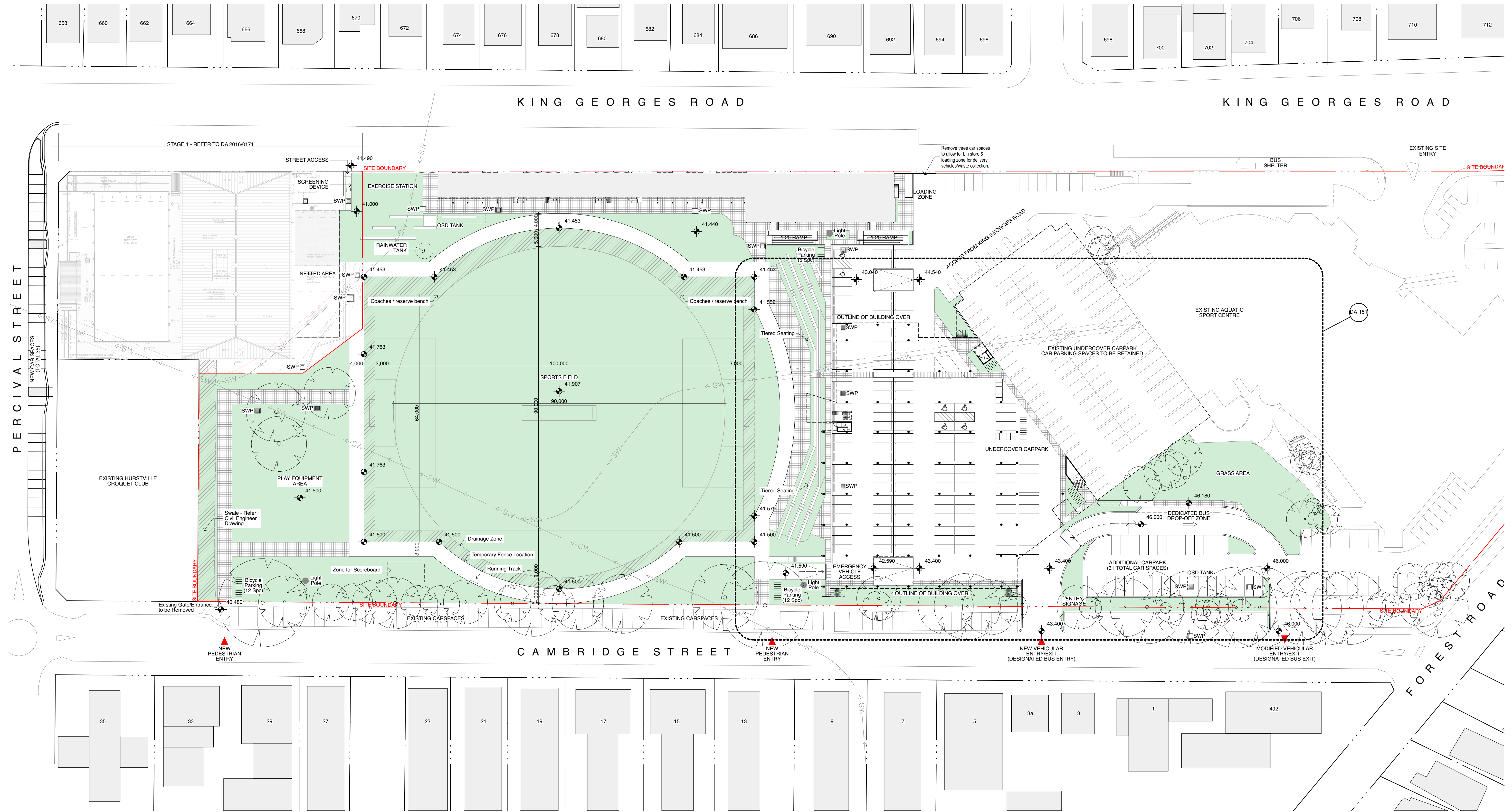
SCALE @ A1 **1:500**

DRAWN **AK**

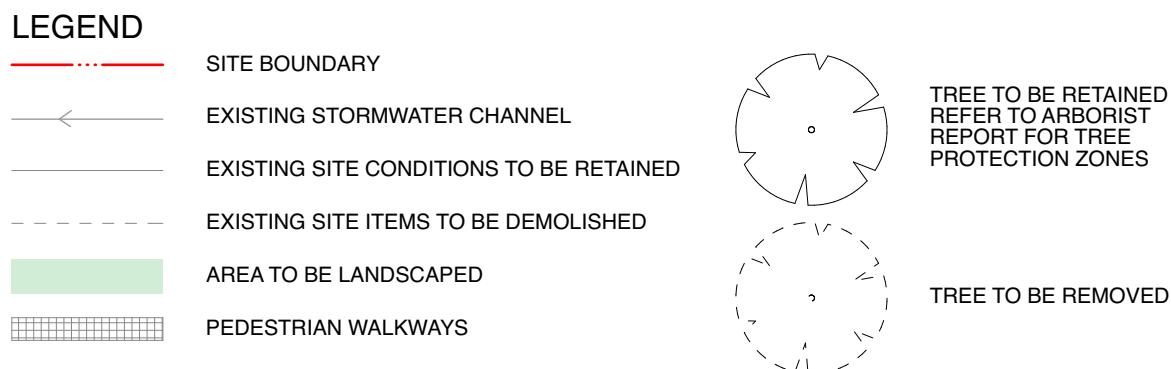
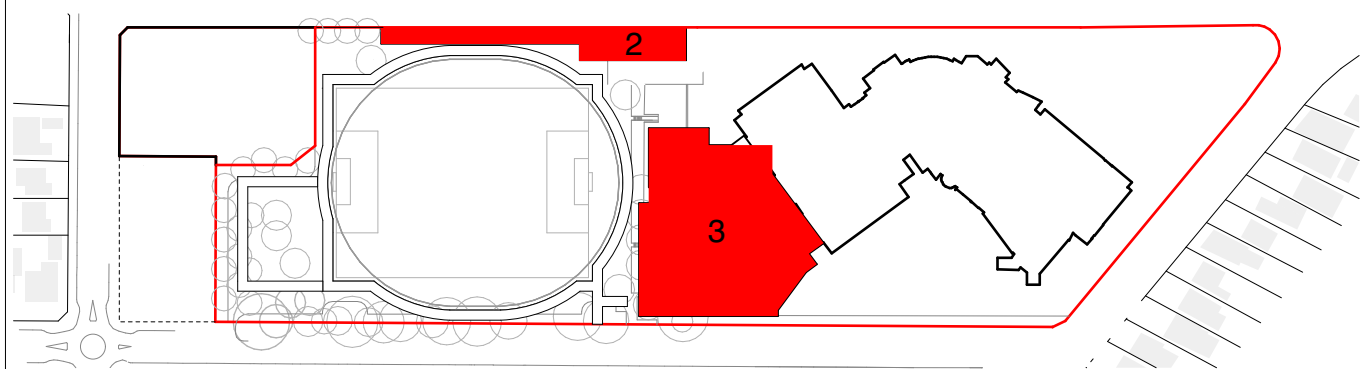
CHKD **AB** REVISION **A**

Site Plan - Demolition





REFER TO LANDSCAPE PLAN PREPARED BY LANDSCAPE CONSULTANT "STURT NOBLE ASSOCIATES"

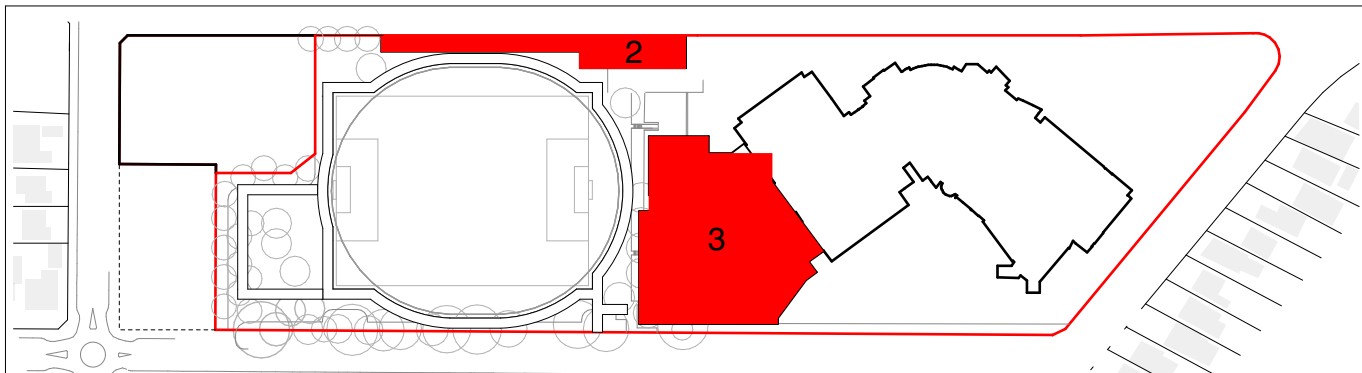
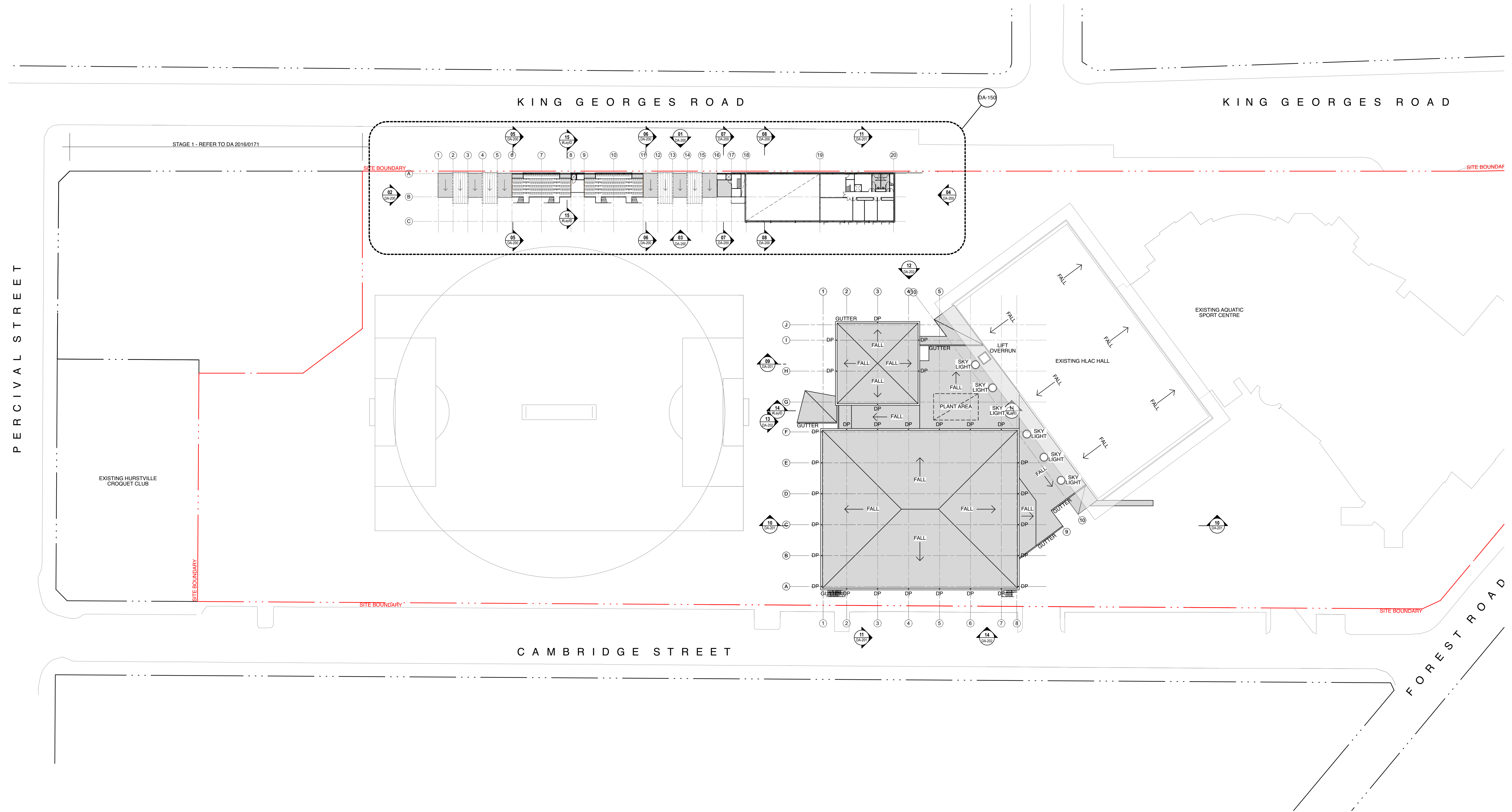


A		11/08/2017		DEVELOPMENT APPLICATION	
ISSUE		DATE		REVISION	
PROJECT		PENSHURST SPORTING HUB			
ADDRESS		PENSHURST PARK KING GEORGES ROAD PENSHURST NSW 2222 AUSTRALIA		PROJECT #  16002	
CLIENT		GEORGES RIVER COUNCIL		DWG #  DA-003	
DWG		Site Plan - Proposed		16002	
		DATE		22/08/2017	
		SCALE @ A1		1:500	
		DRAWN		AK	
		CHKD		AB	
		REVISION		A	

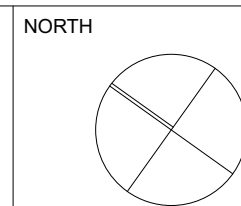








KEY DIAGRAM (NTS)

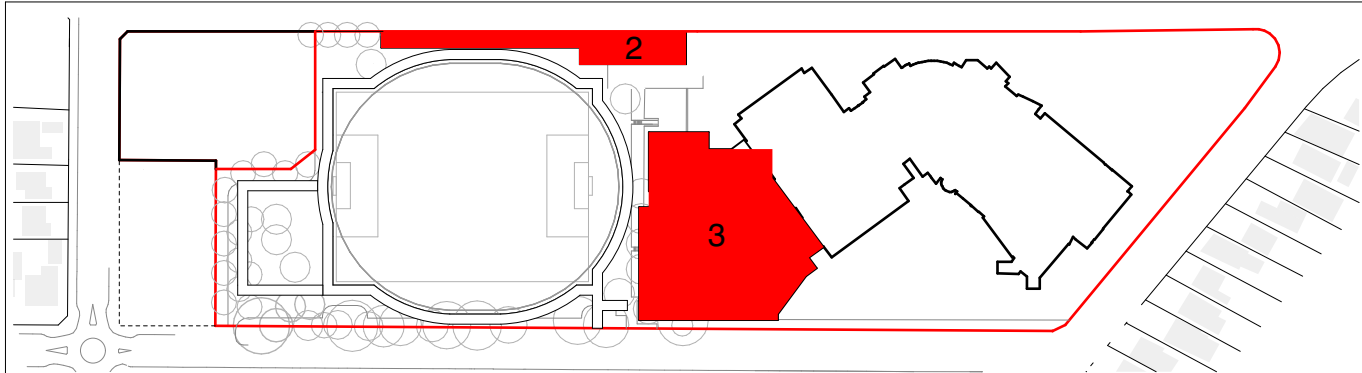
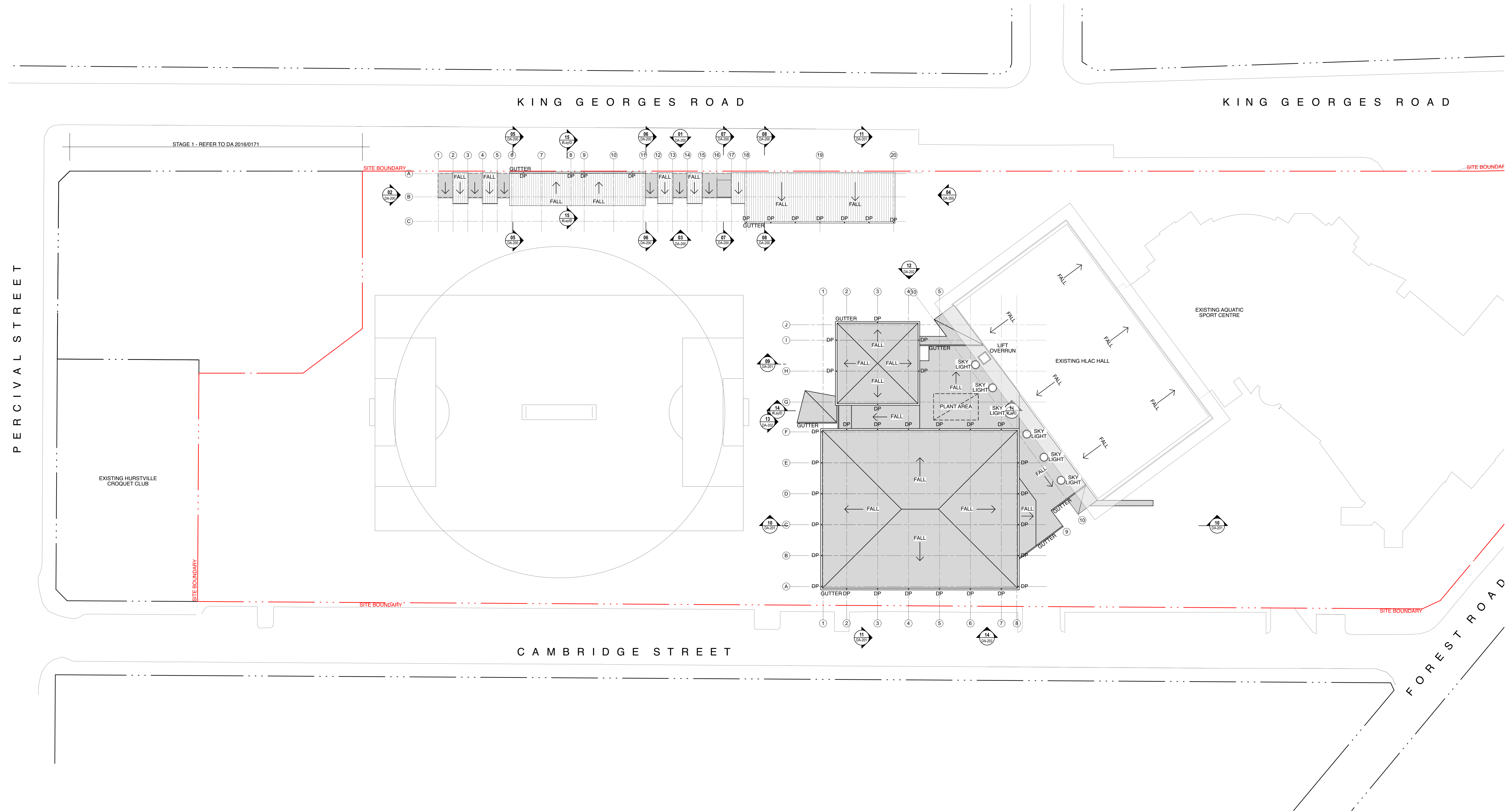


**BKA** architecture  
Baker Kavanagh Architects  
Suite 1.04, 77 Dunning Ave, Rosebery NSW  
T: 612 9318 9220  
W: www.bka.com.au  
F: 612 9318 9222  
E: bka@bka.com.au

All dimensions are in millimetres unless stated otherwise.  
All architectural drawings are to be read in conjunction with the relevant consultant documents. All dimensions and levels are to be checked and verified on site prior to the commencement of work, shop drawings or fabrication of any components. Refer all discrepancies to the Architect for determination. Drawings are not to be scaled. Use only figured dimensions. This drawing is copyright and must not be retained, copied or used without the permission of Baker Kavanagh Architects. This document has been prepared for and on behalf of the clients noted on the drawing. Baker Kavanagh Architects' responsibility is to these clients only and not to any third party who may rely on these documents.

A	11/08/2017	DEVELOPMENT APPLICATION
ISSUE	DATE	REVISION
PROJECT	PENSHURST SPORTING HUB	
ADDRESS	PENSHURST PARK KING GEORGES ROAD PENSHURST NSW 2222 AUSTRALIA	
CLIENT	GEORGES RIVER COUNCIL	
DWG	First Floor Overall Plan	
DATE	22/08/2017	DWG #
SCALE @ A1	1:500	DA-101
DRAWN	AK	
CHKD	AB	
PROJECT #	16002	
REVISION	A	





KEY DIAGRAM (NTS)

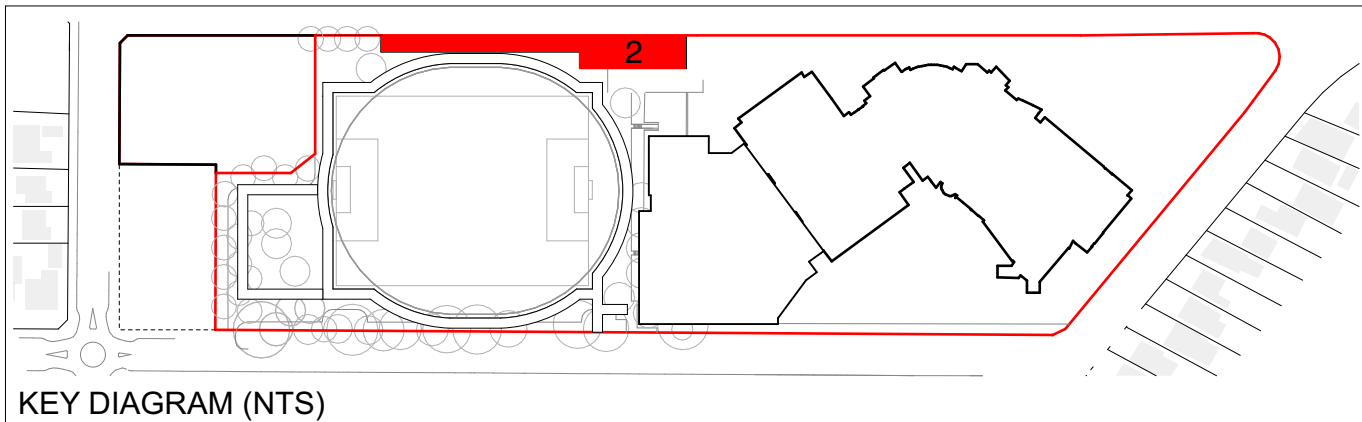
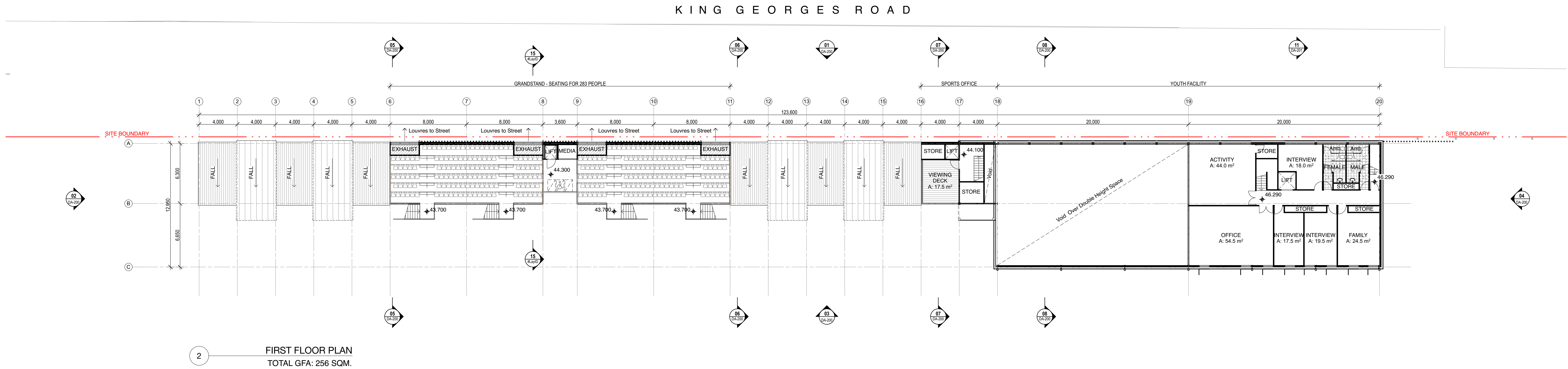
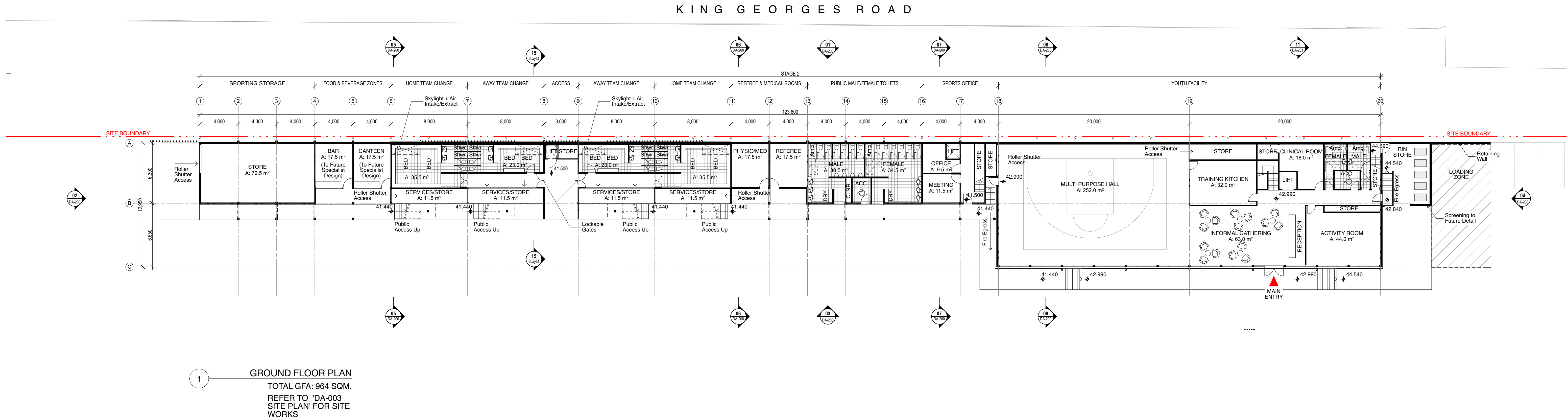
NORTH

**BKA** architecture  
Baker Kavanagh Architects  
Suite 1.04, 77 Dunning Ave, Rosebery NSW  
T: 612 9318 9200 F: 612 9318 9222  
W: www.bka.com.au E: bka@bka.com.au

A		11/08/2017		DEVELOPMENT APPLICATION	
ISSUE	DATE	REVISION			
PROJECT		PENSHURST SPORTING HUB			
ADDRESS		PENSHURST PARK KING GEORGES ROAD PENSHURST NSW 2222 AUSTRALIA		PROJECT #	
				16002	
CLIENT		GEORGES RIVER COUNCIL		DWG #	
				DA-102	
DWG		Roof Plan		REVISION	
				A	

All dimensions are in millimetres unless stated otherwise.  
All architectural drawings are to be read in conjunction with the relevant consultant documents. All dimensions and levels are to be checked and verified on site prior to the commencement of work, shop drawings or fabrication of any components. Refer all discrepancies to the Architect for determination. Drawings are not to be scaled. Use only figured dimensions. This drawing is copyright and must not be retained, copied or used without the permission of Baker Kavanagh Architects. This document has been prepared for and on behalf of the clients noted on the drawing. Baker Kavanagh Architects' responsibility is to these clients only and not to any third party who may rely on these documents.





KEY DIAGRAM (NTS)

NORTH

**BKA** architecture  
Baker Kavanagh Architects  
Suite 1.04, 77 Dunning Ave, Rosebery NSW  
T: 612 9318 9220  
W: www.bka.com.au

F: 612 9318 9222  
E: bka@bka.com.au

A 11/08/2017 DEVELOPMENT APPLICATION  
ISSUE DATE REVISION  
PROJECT **PENHURST SPORTING HUB**  
ADDRESS **PENHURST PARK KING GEORGES ROAD PENHURST NSW 2222 AUSTRALIA**  
CLIENT **GEORGES RIVER COUNCIL**  
DWG **Stage 2 - Floor Plans**

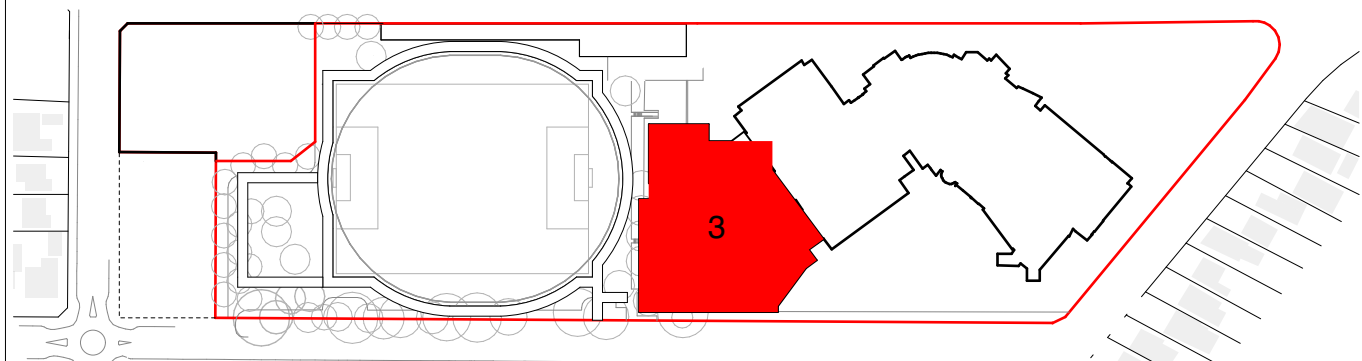
PROJECT # **16002**  
DATE **22/08/2017** DWG # **DA-150**  
SCALE @ A1 **1:200**  
DRAWN **AK**  
CHKD **AB** REVISION **A**

All dimensions are in millimetres unless stated otherwise.  
All architectural drawings are to be read in conjunction with the relevant consultant documents. All dimensions and levels are to be checked and verified on site prior to the commencement of work, shop drawings or fabrication of any components. Refer all discrepancies to the Architect for determination. Drawings are not to be scaled. Use only figured dimensions. This drawing is copyright and must not be retained, copied or used without the permission of Baker Kavanagh Architects. This document has been prepared for and on behalf of the clients noted on the drawing. Baker Kavanagh Architects' responsibility is to these clients only and not to any third party who may rely on these documents.

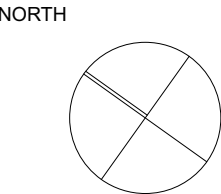




REFER TO DA - 003 SITE PLAN - PROPOSED FOR OVERALL TRAFFIC CONCEPT



KEY DIAGRAM (NTS)

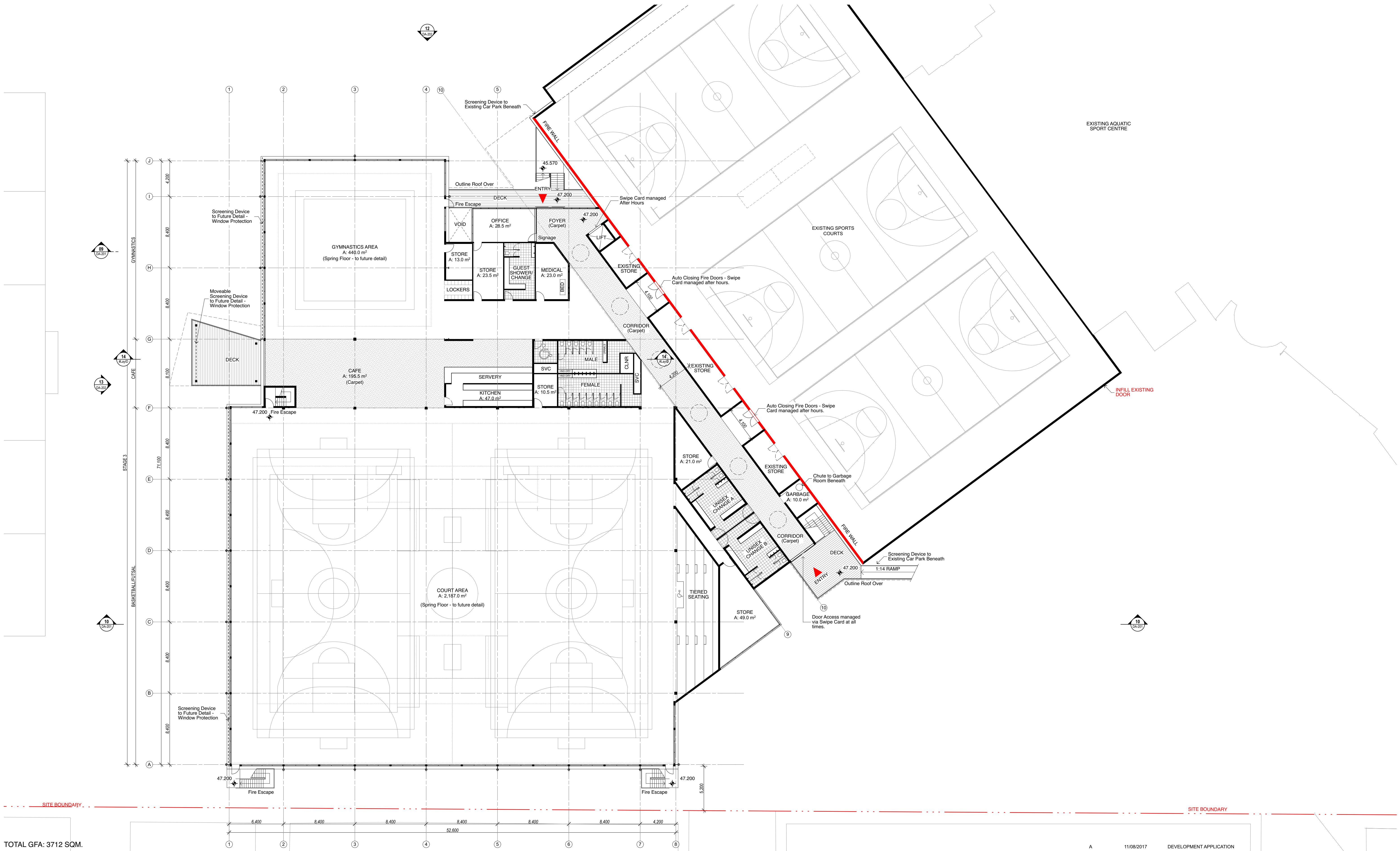


**BKA** architecture  
Baker Kavanagh Architects  
Suite 1.04, 77 Dunning Ave, Rosebery NSW  
T: 612 9318 9200  
W: www.bka.com.au  
F: 612 9318 9222  
E: bka@bka.com.au

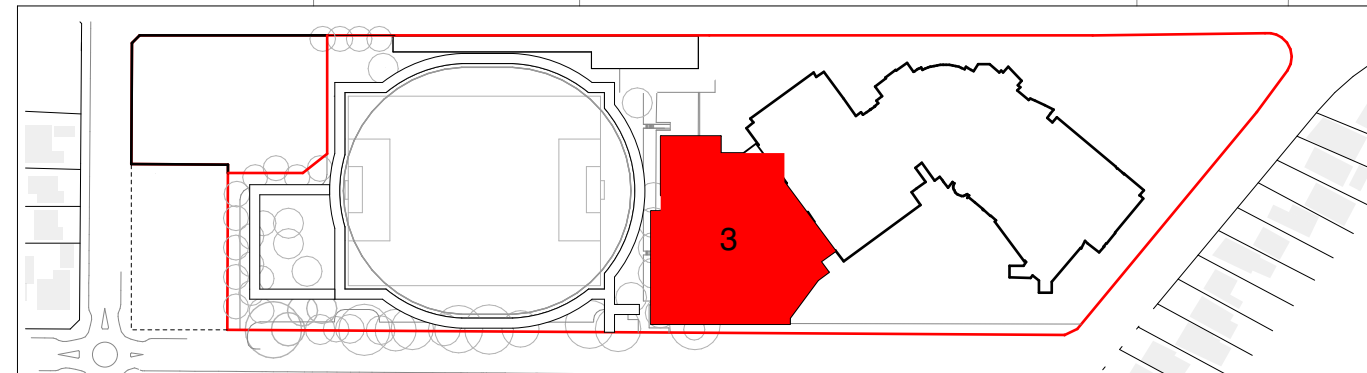
All dimensions are in millimetres unless stated otherwise.  
All architectural drawings are to be read in conjunction with the relevant consultant documents. All dimensions and levels are to be checked and verified on site prior to the commencement of work, shop drawings or fabrication of any components. Refer all discrepancies to the Architect for determination. Drawings are not to be scaled, use only figured dimensions. This drawing is copyright and must not be retained, copied or used without the permission of Baker Kavanagh Architects. This document has been prepared for and on behalf of the clients noted on the drawing. Baker Kavanagh Architect's responsibility is to these clients only and not to any third party who may rely on these documents.

ISSUE	DATE	REVISION
PROJECT	11/08/2017	DEVELOPMENT APPLICATION
ADDRESS	PENSHURST SPORTING HUB	
CLIENT	PENSHURST PARK KING GEORGES ROAD PENSHURST NSW 2222 AUSTRALIA	
DWG	GEORGES RIVER COUNCIL	
CHRD	Car Park Plan	
PROJECT #	16002	
DATE	22/08/2017	DWG #
SCALE @ A1	1:200	DA-151
DRAWN	AK	REVISION
CHKD	AB	A

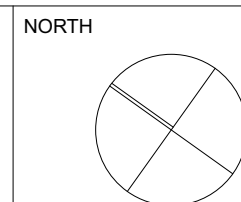




TOTAL GFA: 3712 SQM.



KEY DIAGRAM (NTS)

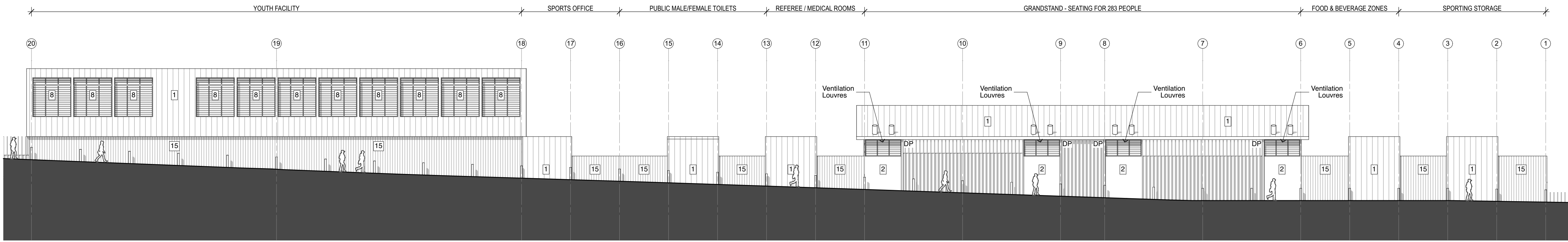


**BKA** architecture  
Baker Kavanagh Architects  
Suite 1.04, 77 Dunning Ave, Rosebery NSW  
T: 612 9318 9200  
W: www.bka.com.au  
F: 612 9318 9222  
E: bka@bka.com.au

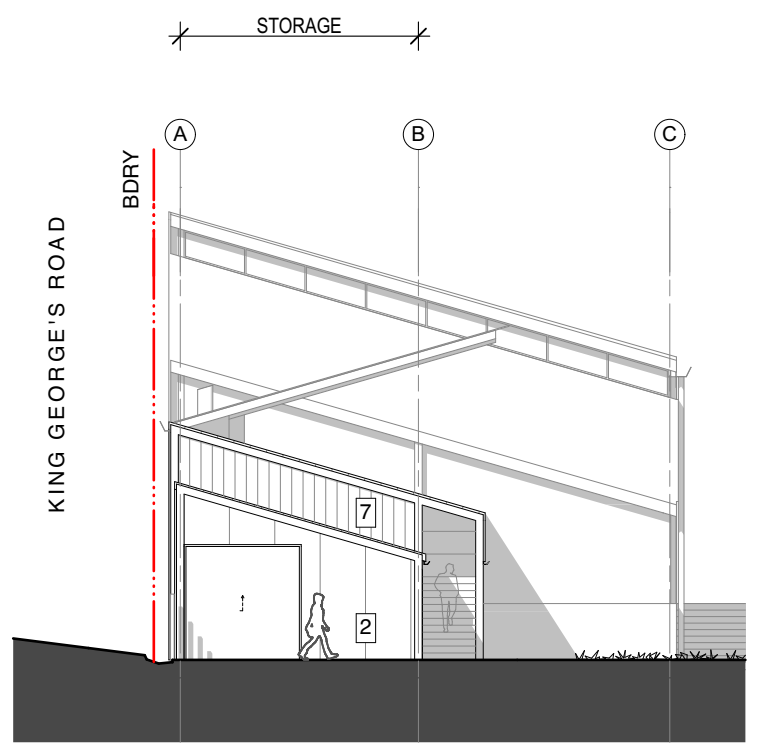
All dimensions are in millimetres unless stated otherwise.  
All architectural drawings are to be read in conjunction with the relevant consultant documents. All dimensions and levels are to be checked and verified on site prior to the commencement of work, shop drawings or fabrication of any components. Refer all discrepancies to the Architect for determination. Drawings are not to be scaled, use only figured dimensions. This drawing is copyright and must not be retained, copied or used without the permission of Baker Kavanagh Architects. This document has been prepared for and on behalf of the clients noted on the drawing. Baker Kavanagh Architect's responsibility is to these clients only and not to any third party who may rely on these documents.

A	11/08/2017	DEVELOPMENT APPLICATION
ISSUE	DATE	REVISION
PROJECT	PENSHURST SPORTING HUB	
ADDRESS	PENSHURST PARK KING GEORGES ROAD PENSHURST NSW 2222 AUSTRALIA	
CLIENT	GEORGES RIVER COUNCIL	
DWG	Stage 3 - Floor Plan	
DATE	22/08/2017	DWG #
SCALE @ A1	1:200	16002
DRAWN	AK	DA-152
CHKD	AB	REVISION
		A

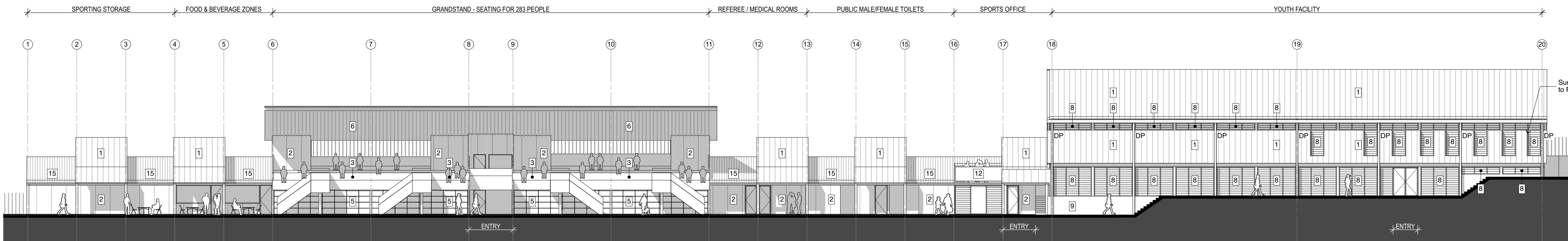




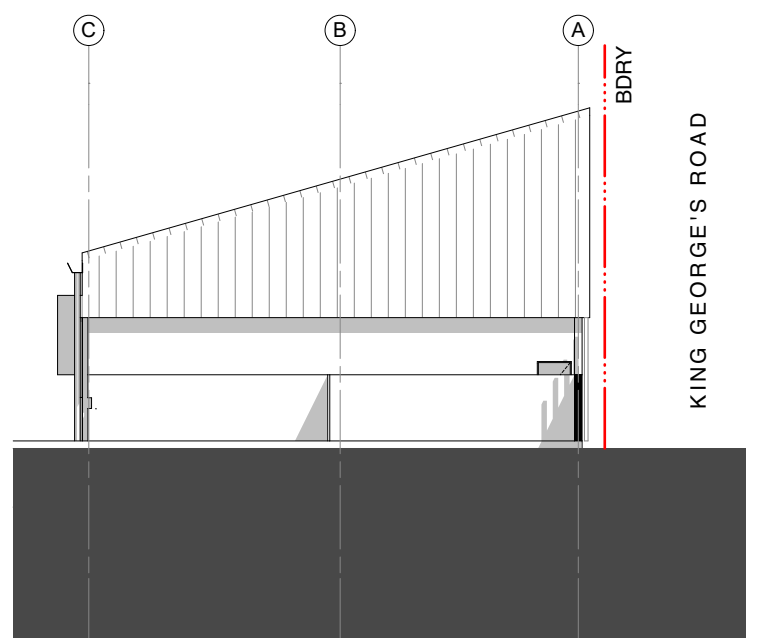
01 North Elevation - King Georges Road



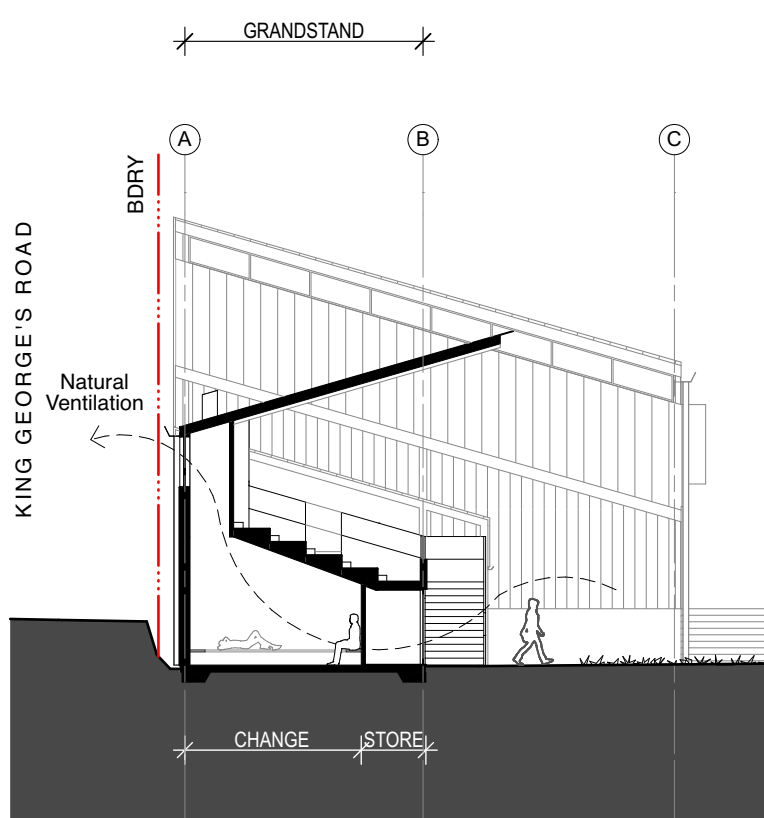
02 West Elevation



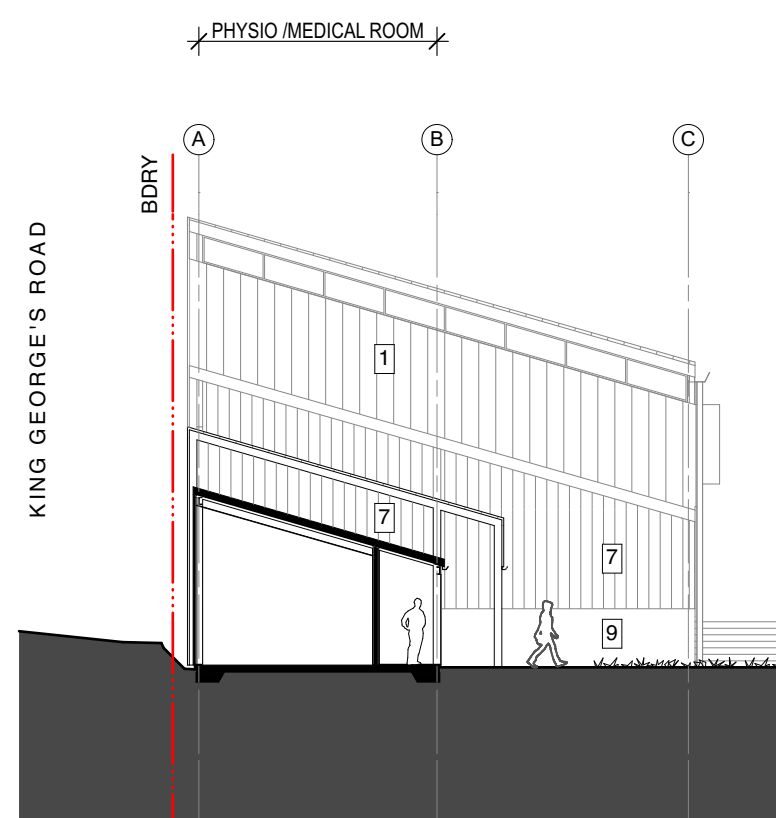
03 South Elevation - View from Field



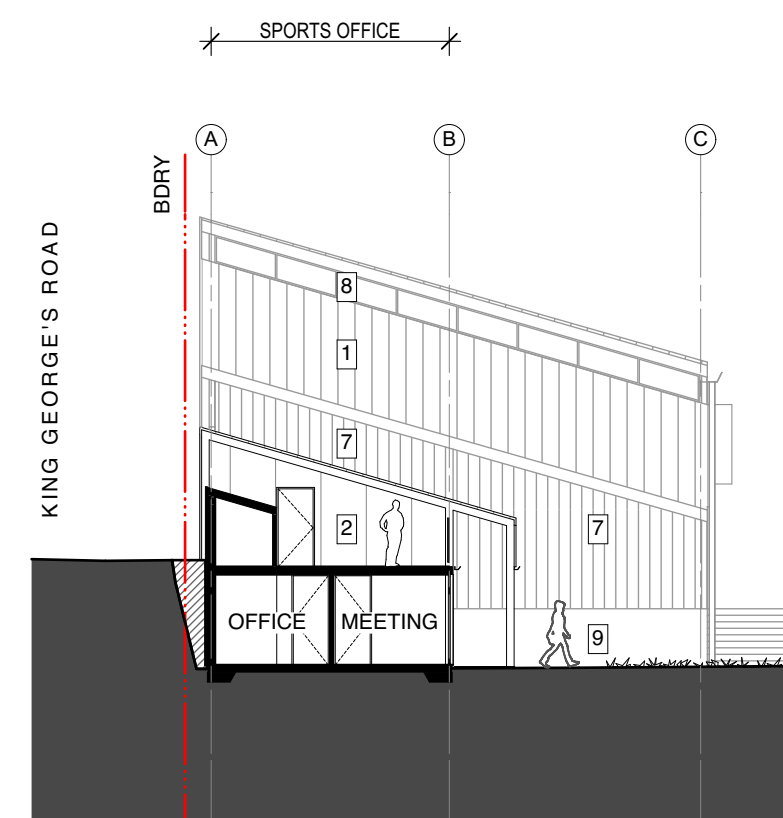
04 East Elevation



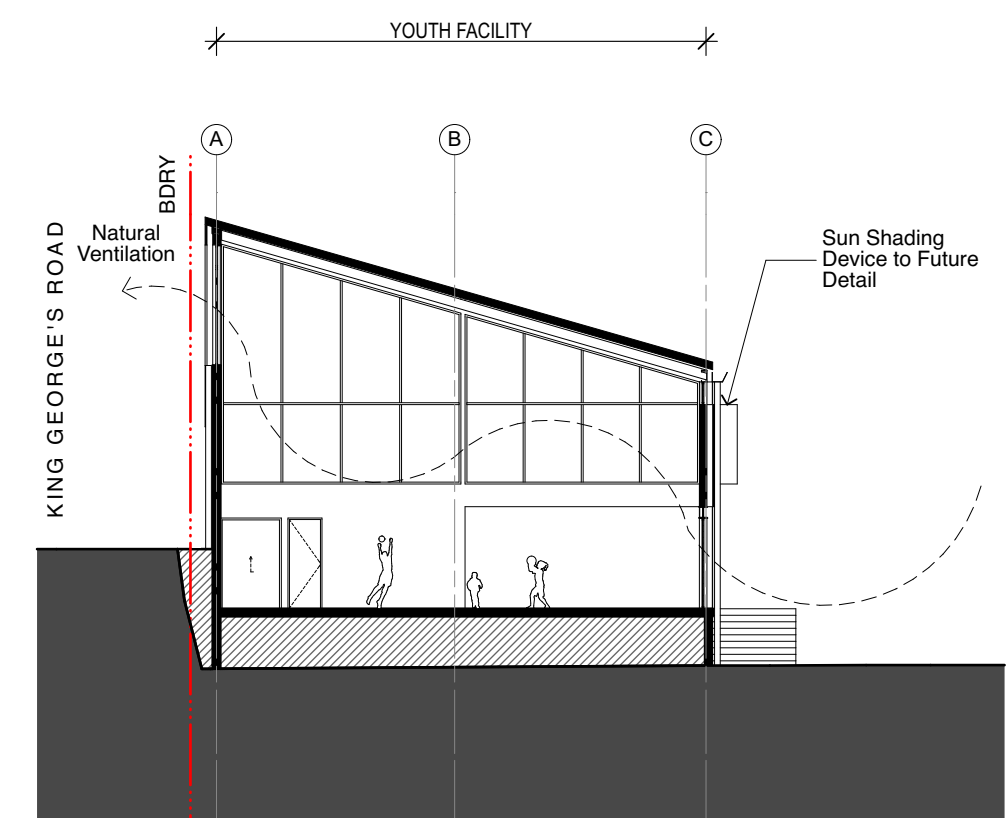
05 Section - Grandstand



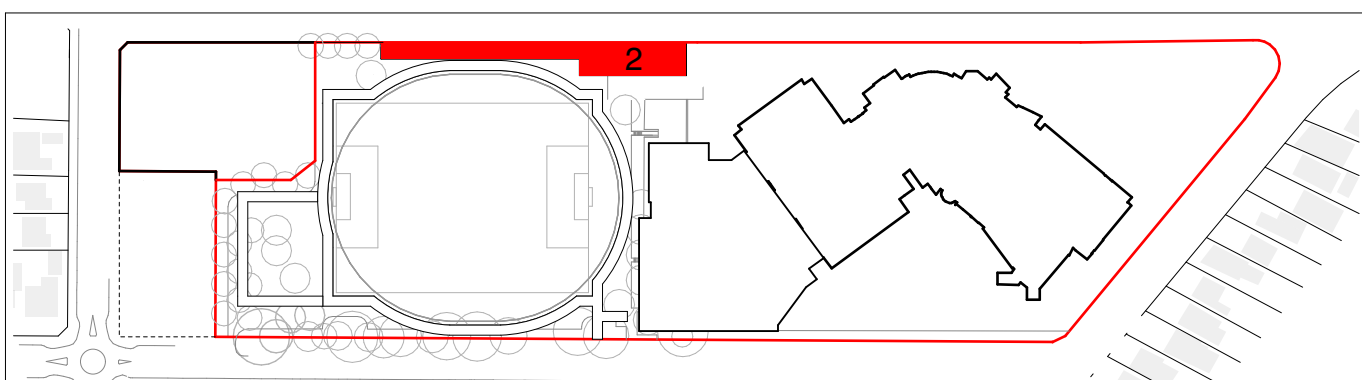
06 Section - Physio/Medical



07 Section - Viewing Platform

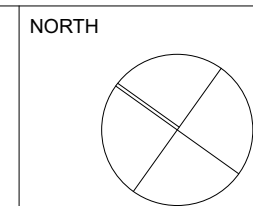


08 Section - Youth Centre



KEY DIAGRAM (NTS)

- FINISHES**
1. Metal Cladding 450mm Vertical Metal Panels - Colorbond 'Citi'
  2. Cementitious External Cladding with joint/bungs expressed
  3. Clear Glass Panels - 600mm high
  4. Concrete - Natural Colour with joints expressed
  5. Infront - Fine Anodised Metal Screens, Behind - Cementitious Colour Wall Panel - '3GY1-W'
  6. Linear ceiling lining/panels - Dulux Colour 'White on White'
  7. Clear or Opaque Polycarbonate Panels - fixed vertically
  8. Glass Louvers with Metal Frame, Colorbond Colour - 'Monument'
  9. Charcoal Blockwork
  10. Concrete Slabs & Slab Edge - Natural Colour
  11. 450mm Horizontal Metal Panels - Colorbond 'Headland'
  12. Clear Glass Balustrade
  13. Metal Cladding 450mm Horizontal Metal Panels - Colorbond Metallic 'Citi'
  14. Gutters/Downpipes/Exposed Columns/Exposed Beam - Colorbond Colour 'Monument'
  15. Metal Cladding 200mm Vertical Metal Panels - Colorbond 'Citi'

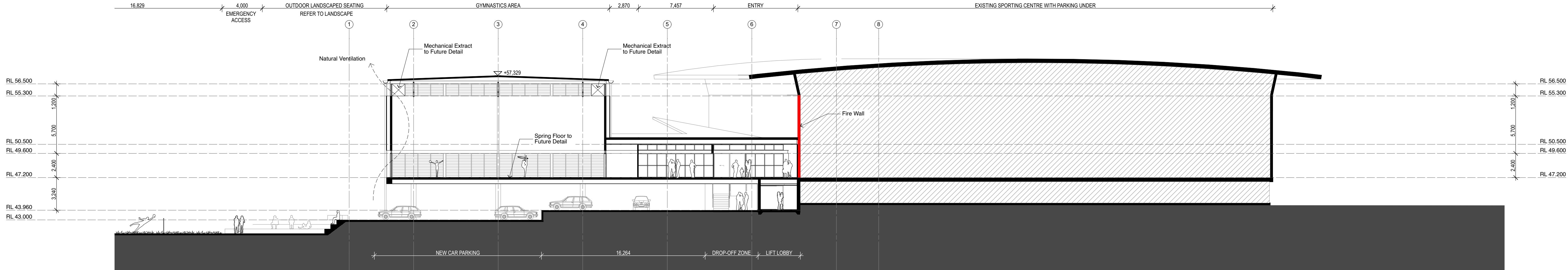


**BKA** architecture  
Baker Kavanagh Architects  
Suite 1.04, 77 Durrington Ave, Rosebery NSW  
T: 612 9319 9200 F: 612 9319 9222  
W: www.bka.com.au E: bka@bka.com.au

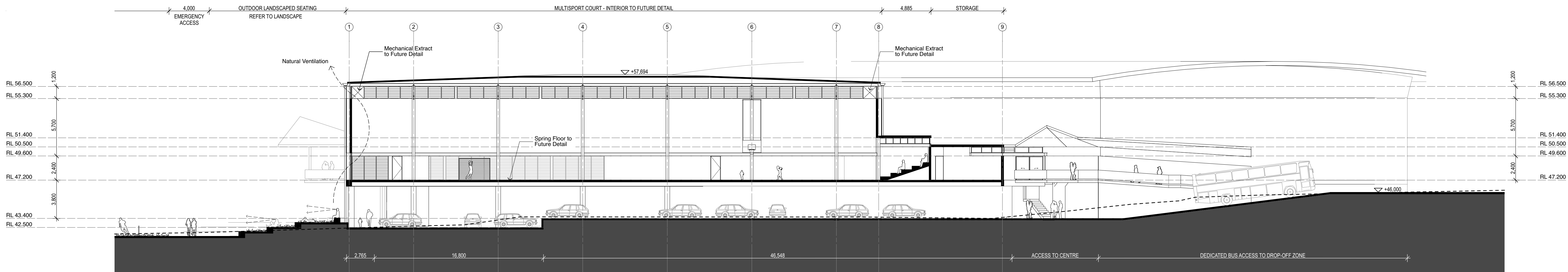
All dimensions are in millimetres unless stated otherwise.  
All architectural drawings are to be read in conjunction with the relevant consultant documents. All dimensions and levels are to be checked and verified on site prior to the commencement of work, shop drawings or fabrication of any components. Refer all discrepancies to the Architect for determination. Drawings are not to be scaled, use only figured dimensions. This drawing is copyright and must not be retained, copied or used without the permission of Baker Kavanagh Architects. This document has been prepared for and on behalf of the clients noted on the drawing. Baker Kavanagh Architects' responsibility is to these clients only and not to any third party who may rely on these documents.

A	11/08/2017	DEVELOPMENT APPLICATION
ISSUE	DATE	REVISION
PROJECT	PENSHURST SPORTING HUB	
ADDRESS	PENSHURST PARK KING GEORGES ROAD PENSHURST NSW 2222 AUSTRALIA	
CLIENT	GEORGES RIVER COUNCIL	
DWG	Stage 2 - Sections & Elevations	
DATE	22/08/2017	DWG #
SCALE @ A1	1:200	DA-200
DRAWN	AK	REVISION
CHKD	AB	A

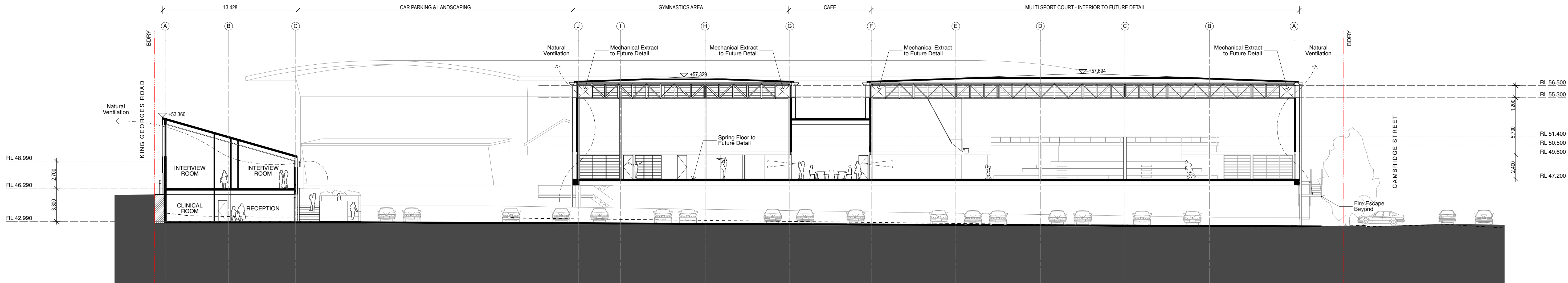




09 Section

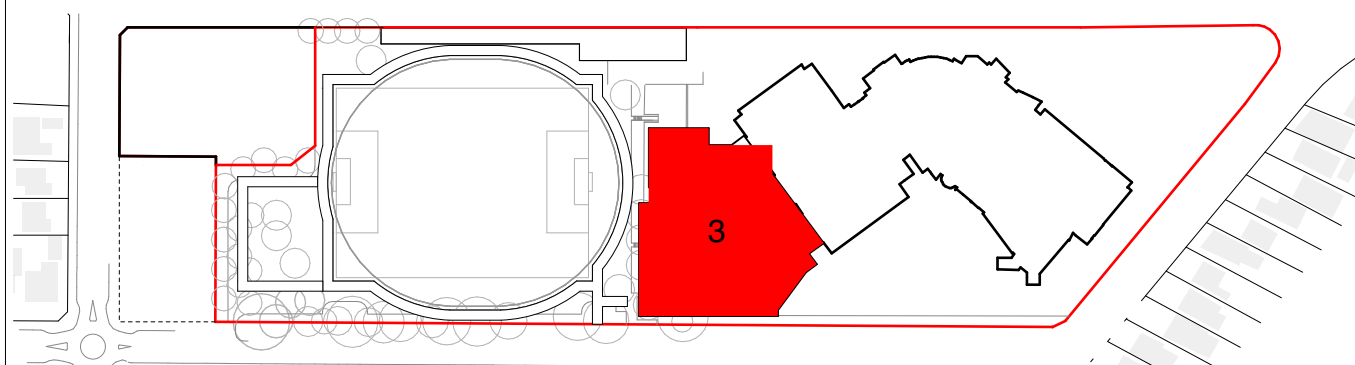


10 Section

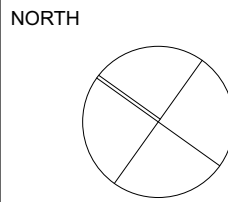


11 Section

LIGHTING / ACOUSTIC / SPECIALIST DETAILS TO FUTURE DETAIL



KEY DIAGRAM (NTS)

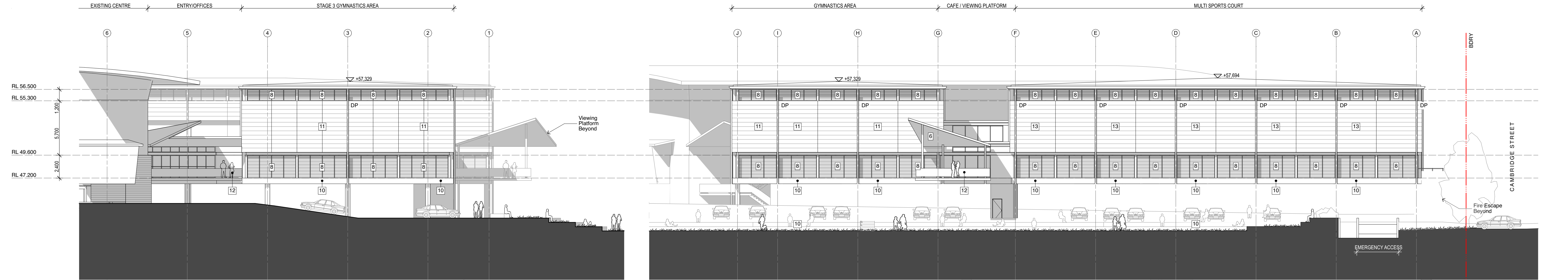


**BKA** architecture  
Baker Kavanagh Architects  
Suite 1.04, 77 Dunning Ave, Rosebery NSW  
T: 612 9318 9200 F: 612 9318 9222  
W: www.bka.com.au E: bka@bka.com.au

All dimensions are in millimetres unless stated otherwise.  
All architectural drawings are to be read in conjunction with the relevant consultant documents. All dimensions and levels are to be checked and verified on site prior to the commencement of work, shop drawings or fabrication of any components. Refer all discrepancies to the Architect for determination. Drawings are not to be scaled, use only figured dimensions. This drawing is copyright and must not be retained, copied or used without the permission of Baker Kavanagh Architects. This document has been prepared for and on behalf of the clients noted on the drawing. Baker Kavanagh Architect's responsibility is to these clients only and not to any third party who may rely on these documents.

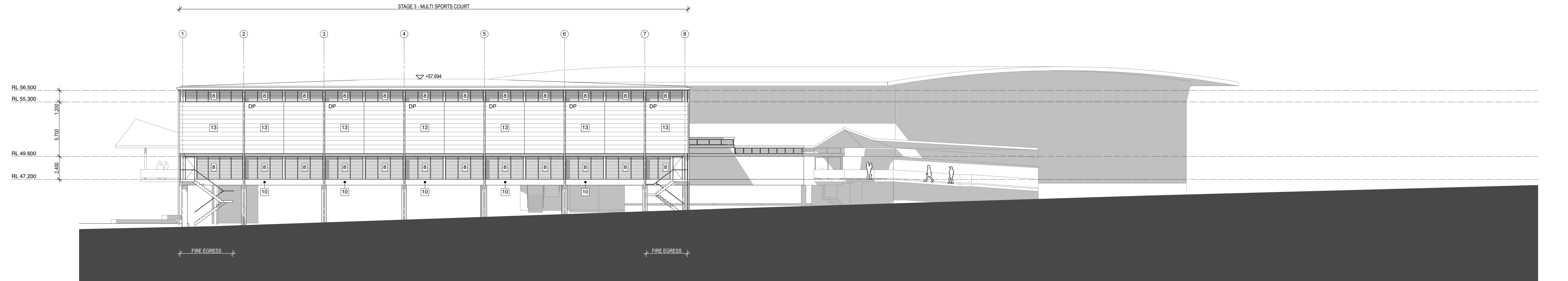
A	11/08/2017	DEVELOPMENT APPLICATION
ISSUE	DATE	REVISION
PROJECT	PENSHURST SPORTING HUB	
ADDRESS	PENSHURST PARK KING GEORGES ROAD PENSHURST NSW 2222 AUSTRALIA	
CLIENT	GEORGES RIVER COUNCIL	
DWG	Stage 3 - Sections	
DATE	22/08/2017	DWG #
SCALE @ A1	1:200	DA-201
DRAWN	AK	
CHKD	AB	REVISION
		A



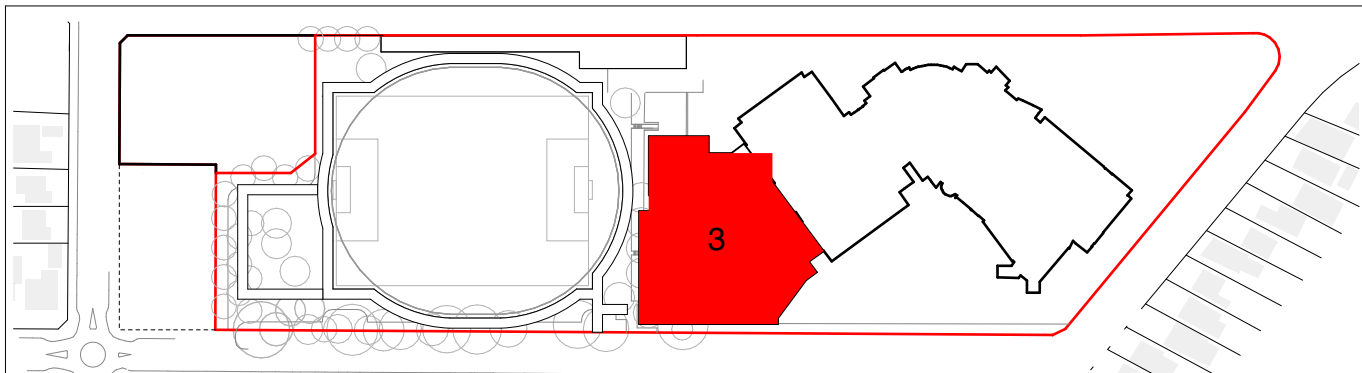


12 Elevation - King Georges Road

13 Elevation - View from Field

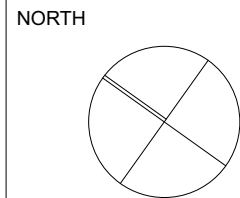


14 Elevation - Cambridge St



KEY DIAGRAM (NTS)

- FINISHES**
1. Metal Cladding 450mm Vertical Metal Panels - Colorbond 'Citi'
  2. Cementitious External Cladding with joint/burrs expressed
  3. Clear Glass Panels - 600mm high
  4. Concrete - Natural Colour with joints expressed
  5. Infront - Fine Anodised Metal Screens, Behind - Cementitious Colour Wall Panel - '3GY1-W'
  6. Linear ceiling lining/panels - Dulux Colour 'White on White'
  7. Clear or Opaque Polycarbonate Panels - fixed vertically
  8. Glass Louvres with Metal Frame, Colorbond Colour - 'Monument'
  9. Charcoal Blockwork
  10. Concrete Slabs & Slab Edge - Natural Colour
  11. 450mm Horizontal Metal Panels - Colorbond 'Headland'
  12. Clear Glass Balustrade
  13. Metal Cladding 450mm Horizontal Metal Panels - Colorbond Metallic 'Citi'
  14. Gutters/Downpipes/Exposed Columns/Exposed Beam - Colorbond Colour 'Monument'
  15. Metal Cladding 200mm Vertical Metal Panels - Colorbond 'Citi'

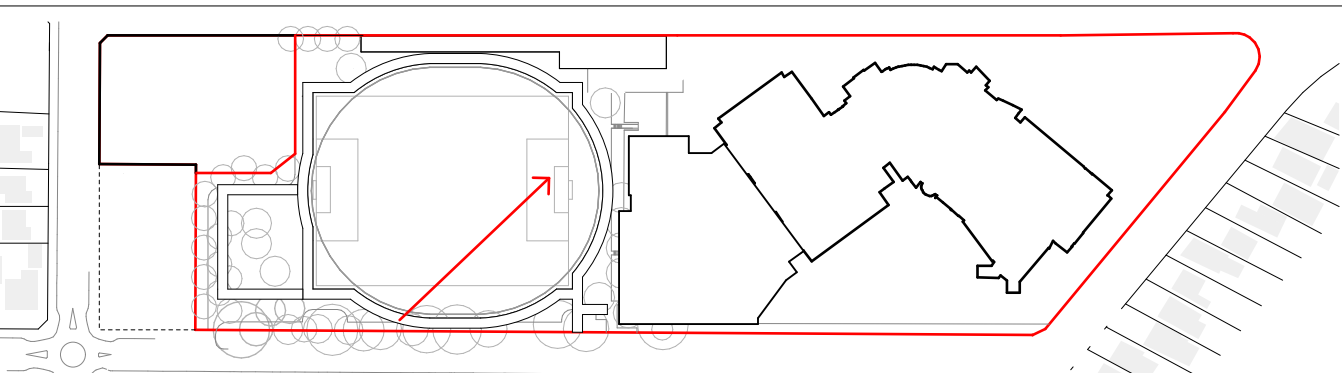
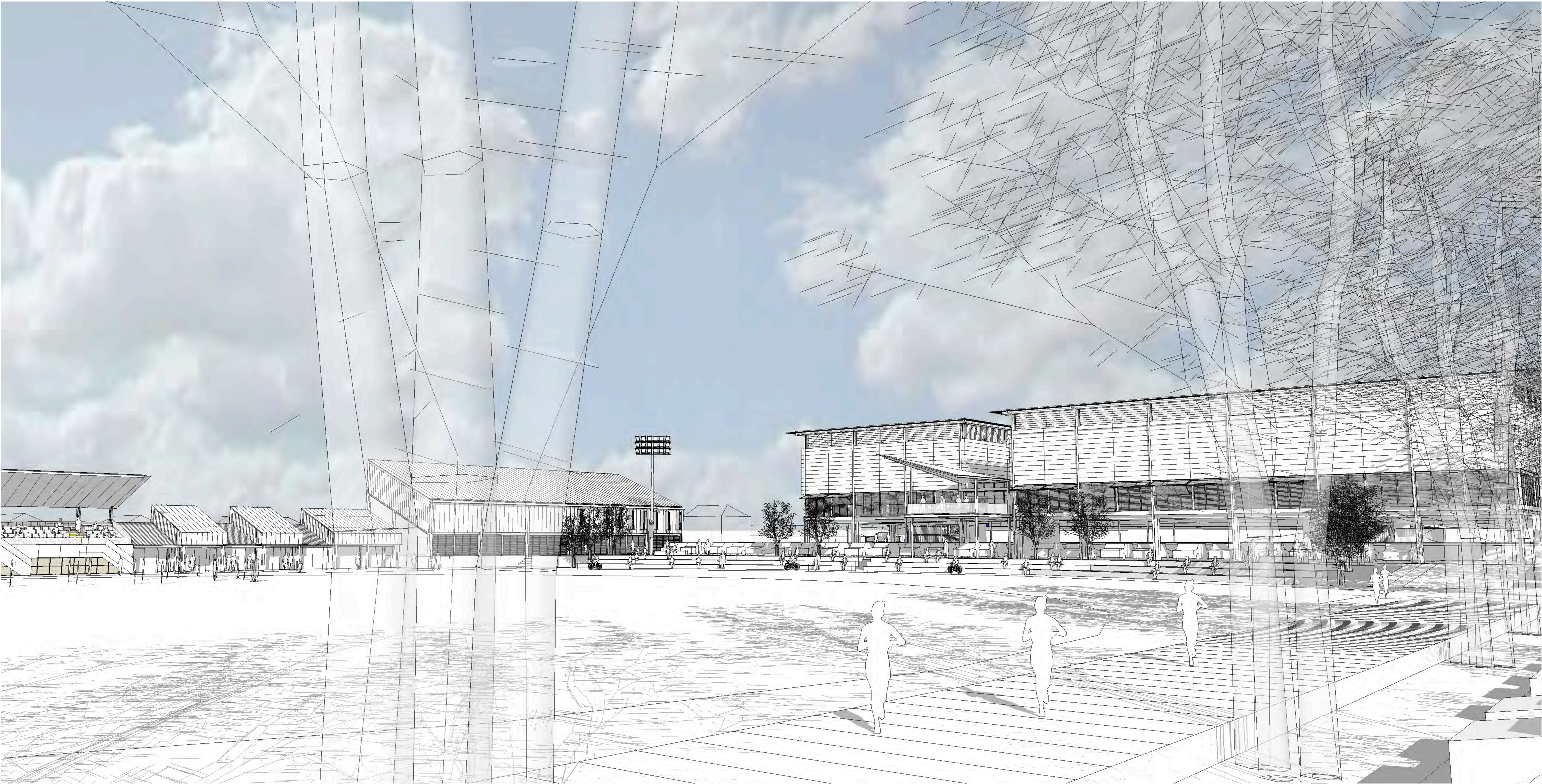


**BKA** architecture  
Baker Kavanagh Architects  
Suite 1.04, 77 Dunning Ave, Rosebery NSW  
T: 612 9318 9200  
W: www.bka.com.au  
F: 612 9318 9222  
E: bka@bka.com.au

All dimensions are in millimetres unless stated otherwise.  
All architectural drawings are to be read in conjunction with the relevant consultant documents. All dimensions and levels are to be checked and verified on site prior to the commencement of work, shop drawings or fabrication of any components. Refer all discrepancies to the Architect for determination. Drawings are not to be scaled, use only figured dimensions. This drawing is copyright and must not be retained, copied or used without the permission of Baker Kavanagh Architects. This document has been prepared for and on behalf of the clients noted on the drawing. Baker Kavanagh Architects' responsibility is to these clients only and not to any third party who may rely on these documents.

11/08/2017		DEVELOPMENT APPLICATION	
ISSUE	DATE	REVISION	
PROJECT <b>PENSHURST SPORTING HUB</b>			
ADDRESS			PROJECT #
<b>PENSHURST PARK KING GEORGES ROAD PENSHURST NSW 2222 AUSTRALIA</b>			16002
CLIENT	<b>GEORGES RIVER COUNCIL</b>		DWG #
DWG			<b>DA-202</b>
	Stage 3 - Elevations		
	DATE	22/08/2017	
	SCALE @ A1	1:200	
	DRAWN	AK	
	CHKD	AB	REVISION
			A





KEY DIAGRAM (NTS)

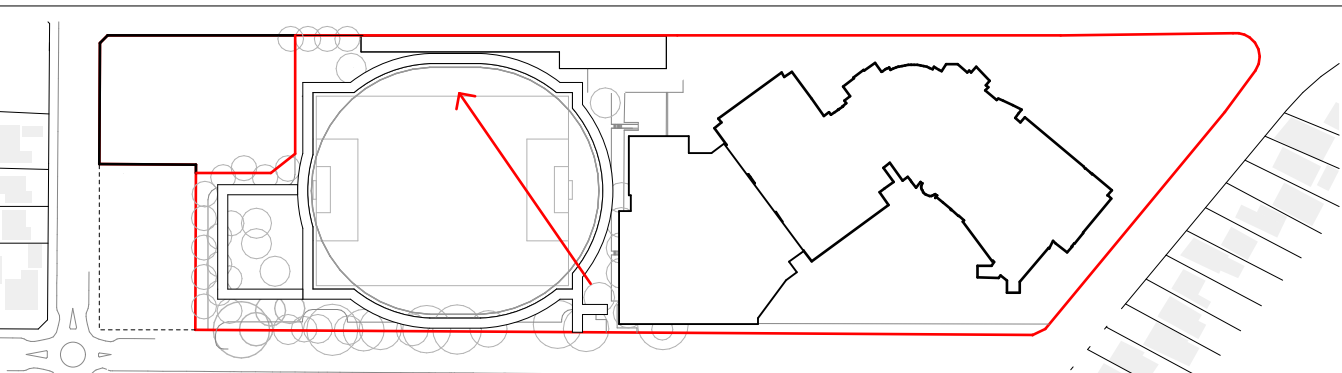
NORTH

**BKA** architecture  
Baker Kavanagh Architects  
Suite 1.04, 77 Dunning Ave, Rosebery NSW  
T: 612 9318 9200 F: 612 9318 9222  
W: www.bka.com.au E: bka@bka.com.au

ISSUE	A	11/08/2017	DEVELOPMENT APPLICATION
PROJECT	DATE	REVISION	
PENSURST SPORTING HUB			
ADDRESS			PROJECT #
PENSURST PARK KING GEORGES ROAD PENSURST NSW 2222 AUSTRALIA			16002
CLIENT	GEORGES RIVER COUNCIL		DWG #
3D View 1			DA-900
DWG	DATE	22/08/2017	REVISION
	SCALE @A1		
	DRAWN	AK	
	CHKD	AB	

All dimensions are in millimetres unless stated otherwise.  
All architectural drawings are to be read in conjunction with the relevant consultant documents. All dimensions and levels are to be checked and verified on site prior to the commencement of work, shop drawings or fabrication of any components. Refer all discrepancies to the Architect for determination. Drawings are not to be scaled. Use only figured dimensions. This drawing is copyright and must not be retained, copied or used without the permission of Baker Kavanagh Architects. This document has been prepared for and on behalf of the clients noted on the drawing. Baker Kavanagh Architects' responsibility is to these clients only and not to any third party who may rely on these documents.





KEY DIAGRAM (NTS)

NORTH

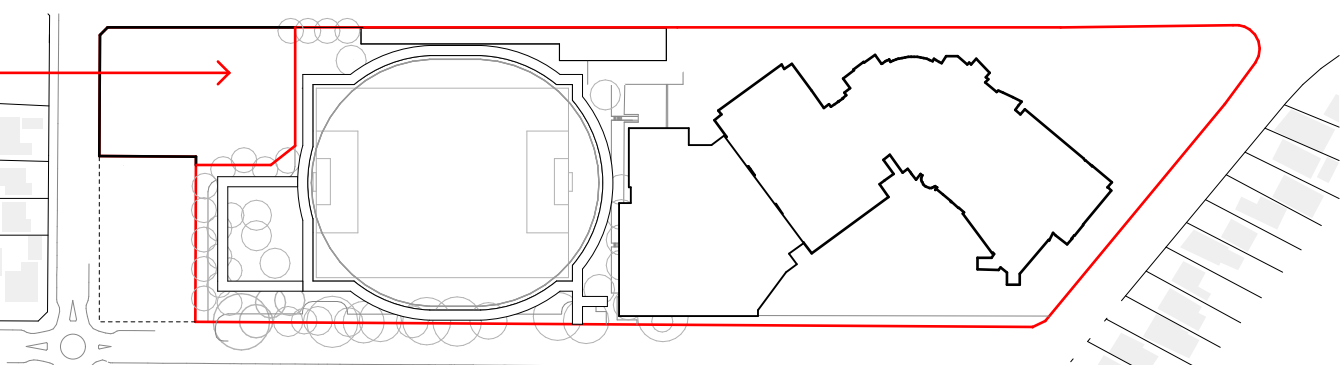
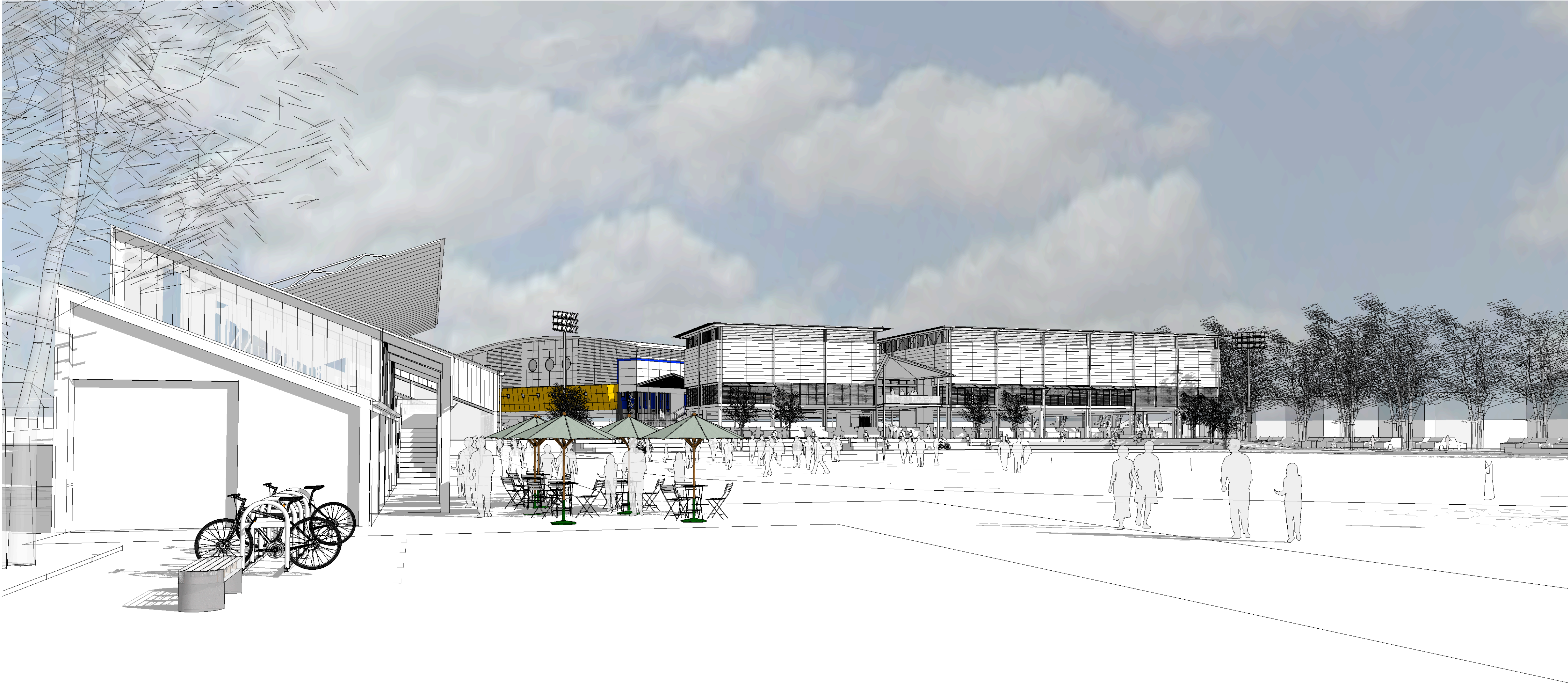
**BKA** architecture  
Baker Kavanagh Architects  
Suite 1.04, 77 Dunning Ave, Rosebery NSW  
T: 612 9318 9220 F: 612 9318 9222  
W: www.bka.com.au E: bka@bka.com.au

ISSUE	A	11/08/2017	DEVELOPMENT APPLICATION
PROJECT	PENSHURST SPORTING HUB		
ADDRESS	PENSHURST PARK KING GEORGES ROAD PENSHURST NSW 2222 AUSTRALIA		
CLIENT	GEORGES RIVER COUNCIL		
DWG	3D View 2		

DATE	22/08/2017	DWG #	16002
SCALE	@A1	PROJECT #	16002
DRAWN	AK	DWG #	DA-901
CHKD	AB	REVISION	A

All dimensions are in millimetres unless stated otherwise.  
All architectural drawings are to be read in conjunction with the relevant consultant documents. All dimensions and levels are to be checked and verified on site prior to the commencement of work, shop drawings or fabrication of any components. Refer all discrepancies to the Architect for determination. Drawings are not to be scaled, use only figured dimensions. This drawing is copyright and must not be retained, copied or used with out the permission of Baker Kavanagh Architects. This document has been prepared for and on behalf of the clients noted on the drawing. Baker Kavanagh Architect's responsibility is to these clients only and not to any third party who may rely on these documents.





KEY DIAGRAM (NTS)

NORTH

**BKA** architecture  
Baker Kavanagh Architects  
Suite 1.04, 77 Dunning Ave, Rosebery NSW  
T: 612 9318 9200 F: 612 9318 9222  
W: www.bka.com.au E: bka@bka.com.au

ISSUE	11/08/2017	DEVELOPMENT APPLICATION	
PROJECT	DATE	REVISION	
ADDRESS			
PENSURST PARK KING GEORGES ROAD PENSURST NSW 2222 AUSTRALIA			
CLIENT			
GEORGES RIVER COUNCIL			
DWG			
3D View 3			

DATE	22/08/2017	DWG #	16002
SCALE @ A1			
DRAWN	AK		
CHKD	AB	REVISION	A